



CONTEC

CONSTRUCTION

we build value



**WE HAVE BEEN PROVIDING
INNOVATIVE & COST EFFECTIVE
ENGINEERING SOLUTIONS TO OUR CLIENTS
SINCE 1999.....**

CONTENTS

- 01 COMPANY MISSION**
- 02 OUR VISION**
- 03 SAFETY POLICY**
- 04 QUALITY POLICY**
- 05 OVERVIEW OF CONTEC**
- 06 CONSTRUCTION WORKS**
- 07 FACADE CLADDING**
- 08 PREFABRICATION**
- 09 DESIGN & PROJECT**
- 10 MAJOR COMPLETED PROJECTS**

01 COMPANY MISSION

To service our customers the highest level quality construction projects at fair and market competitive prices.

To ensure the sustainability of our company through repeat and referral business achieved by customer satisfaction in all areas including timeliness, attention to detail and service-minded attitudes
To deliver high-quality, cost-effective projects on schedule by employing and supporting motivated, flexible, and focused teams.

To maintain the highest levels of professionalism, integrity, honesty and fairness in our relationships with our suppliers, subcontractors, professional associates and customers..

02 OUR VISION

In performing their work, to further expand the breadth and depth of products and services provided to the Contractors worldwide,
CONTEC employees subscribe to the values and objectives identified as;

QUALITY

CLIENT ORIENTATION

INNOVATION

WORK STYLE

FINANCIAL SUCCESS





03 ENVIRONMENT AND SAFETY POLICY



Protecting our employees and customers as well as the public and the environment where we provide our services is our core value. Achieving HSE (Health, Safety and Environment) performance goals is placed on an equal level with other critical business objectives and integrated into our daily operations, so that each job can be completed safely and in a way that is protective of the environment.

We continually seek to improve our Health, Safety and Environment policy to ensure that it remains aligned with the best practices in the industry.



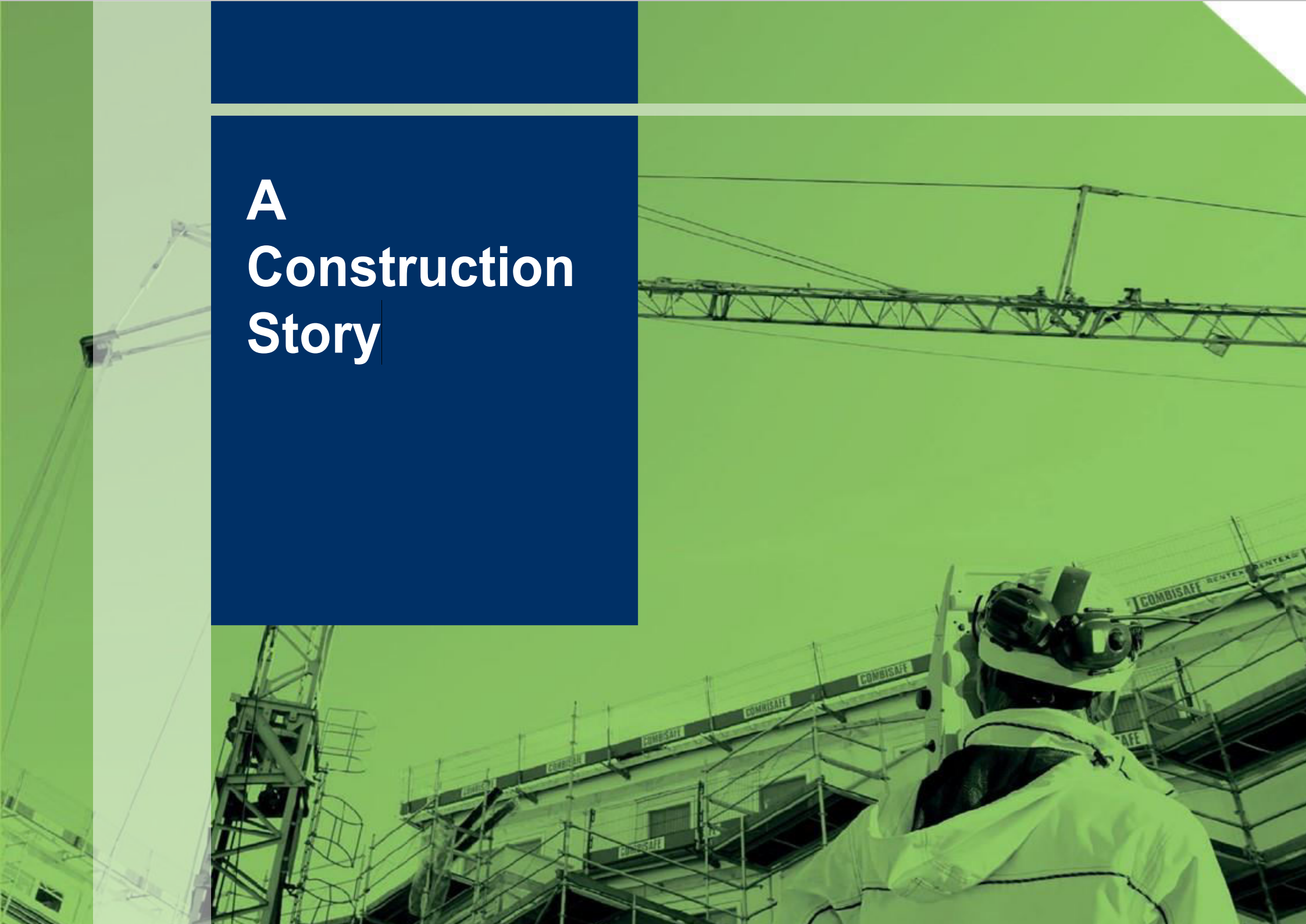
04 QUALITY POLICY

The Management of CONTEC is committed to a policy of effective Quality Management and Quality Assurance. In addition, it is our objective for each project to achieve economic success, to deliver the contracted works to the agreed conditions and to attain the Client's complete satisfaction during all phases of the contract. It is very important to CONTEC to understand how we are perceived by the Client. We strive to provide nothing but the best, whether in the planning or in the execution of the works. In order to achieve these objectives, we have established and implemented a Quality Management System.

Quality objectives for all quality relevant to our works are established to ensure that Client's satisfaction is enhanced by all personnel performing work affecting the product quality. Our adequately qualified personnel and modern sophisticated equipment ensure the achievement of quality during the project execution as well as in the final product. Advance training is also provided where required to ensure the highest competence of our personnel. The Executive Management is committed to the compliance of the Quality Management System and its continual improvement, as well as also securing our economic claims and rights where necessary. Subcontractors are also obliged to conform to the requirements of the established systems which forms an integral part of their contract. Adherence to the Quality Management System is imperative and shall be practiced by all personnel at all levels in all daily activities



A Construction Story



05 OVERVIEW OF CONTEC

SACHS-BOGE Spare Part Warehouse



BALKUPU Sugar Factory



IZMIT Public Houses Precast Area



CRAWFORD Factory



EARTHQUAKE Public Houses



ERSOY PANO Factory



IPEK YOL Textile Factory



PIMPA Pvc Fittings Factory



PRECAST



ARC Apartment



EMT Factory



MEP TEKNIK Factory



1999

2000

2001

2002

2003

2004

2005

GURBULAK Customs Area



ELIT SU Water Factory



GMT Silos



MODERN PLASTIK Pvc Factory



MARPORT



FORMULA 1 Precast Seats



GRAND ASIA



ORION BANK



SAREZ Apartments



HACI SHERIFF BAZAAR



PRIVATE Villa



UCA KHOROG University Campus



PRIVATE



RC COLA Water&Cola Factory



2006

2007

2008

2009

2013

2015

2017

STORY SERVICE Apartment



TJ. PRECIDENCY Guesthouse



TAMOIL Residence



AGA KHAN Hospital



PROFSAYUZ Apartment



SHEROZI Public Houses



06 CONSTRUCTION WORKS

- PUBLIC HOUSES
- INDUSTRIAL PROJECTS
- STEEL STRUCTURES
- HOUSING COMPLEX PROJECTS
- RETROFITTING
- HEAT & WATER PROOFING
- HIGH-STRENGTH CONCRETE
- EPOXY FLOORING
- CLIMBING FORMWORK SYSTEMS
- TUNNEL FORMWORK SYSTEMS
- INFRASTRUCTURES



07 FACADE CLADDING

STRUCTURAL GLAZED FACADE SYSTEMS

ALUCOBOND COMPOSITE PANELS

STONE, GRANITE & MARBLE FACADE CLADDING SYSTEMS

FIBERCEMENT BOARDS

FIBROBETON

INDUSTRIAL SECTIONAL DOORS

PVC, ALUMINUM & COMPOSITE DOOR & WINDOW SYSTEMS



08 PREFABRICATION

- HEAVY PREFABRICATED INDUSTRIAL BUILDINGS
- PRECAST CONCRETE
- CONCRETE POLES
- PREFABRICATED OFFICES
- PU SANDWICH PANELS – ROOF&WALL
- PRE-STRESSED CONCRETE BRIDGE BEAMS
- PRECAST WALL PANELS



09 DESIGN & PROJECT

CONCEPTUAL & PRELIMINARY DESIGN

TOPOGRAPHIC STUDIES

ARCHITECTURAL

STRUCTURE

ELECTRICITY

MECHANIC

INFRASTRUCTURE





Building what matters

10 MAJOR
COMPLETED PROJECTS



The background features a light gray field with large, abstract blue shapes. A curved blue shape is at the top, and a large, angular blue shape is on the right side. The text is centered in the light gray area.

Together We Build Greatness



SHERAZI PUBLIC HOUSES

DUSHANBE - TAJIKISTAN

Type of Work	Concrete Construction
Amount	18.300 m2
Duration	10 Months
Year.....	2008

EARTHQUAKE

PUBLIC HOUSES

ADAPAZARI - TURKEY

Type of Work	Concrete Construction
Amount	21.300 m2
Duration	6 Months
Year.....	2001





SAREZ

APARTMENT BUILDINGS

DUSHANBE - TAJIKISTAN

Type of Work	Concrete Construction
Amount	13.800 m2
Duration	16 Months
Year.....	2007



PROFSAYUZ APARTMENT BUILDING

DUSHANBE - TAJIKISTAN

Type of Work	Concrete Construction
Amount	15.500 m2
Duration	9 Months
Year.....	2006





STORY SERVICE

APARTMENT

DUSHANBE - TAJIKISTAN

Type of Work	Turn - Key
Amount	7.700 m2
Duration	8 Months
Year.....	2006



TAMOIL

RESIDENCE & BUSSINES CENTER

DUSHANBE - TAJIKISTAN

Type of Work	Concrete Construction
.....	Project
.....	Facade
Amount	17.500 m2
Duration	26 Months
Year	2014





HOSHNUD 23

RESIDENCE & BUSSINES CENTER

DUSHANBE - TAJIKISTAN

Type of Work	Project
.....	Facade
Amount	19.500 m2
Duration	19 Months



GMT

WHEAT SILOS

IZMIR - TURKEY

Type of Work	Concrete Construction
Amount	540 m2
Duration	3 Months
Year	2000



ERSOY PANO

FACTORY

KOCAELI - TURKEY

Type of Work	Turnkey
Amount	3.800 m2
Duration	14 Months
Year	2003

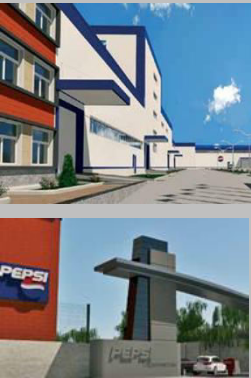


RC COLA

WATER&COLA FACTORY

DUSHANBE - TAJIKISTAN

Type of Work	Project
.....	Facade
Amount	16.500 m2
Duration	16 Months
Year	2014



K.TEPPA MUNICIPALITY

APARTMENT BUILDING

KURGANTEPPA – TAJIKISTAN

Type of Work	Project
Amount	16.500 m2
Duration	16 Months
Year	2011





EVREN INSAAT

FORMULA 1 PRECAST SEATS

ISTANBUL – TURKEY

Type of Work	Precast Production&Montage
Amount	2.700 m3
Duration	9 Months
Year	2004



IPEK YOL TEXTILE FACTORY

EDIRNE - TURKEY

Type of Work	Steel&Concrete Construction
Amount	6.700 m2
Duration	14 Months
Year	2003





TJ. PRESIDENCY

GUESTHOUSE

DUSHANBE – TAJIKISTAN

Type of Work	Concrete Construction
Amount	6.200 m2
Duration	5 Months
Year	2008



PRIVATE

VILLA

DUSHANBE - TAJIKISTAN

Type of Work Concrete Construction

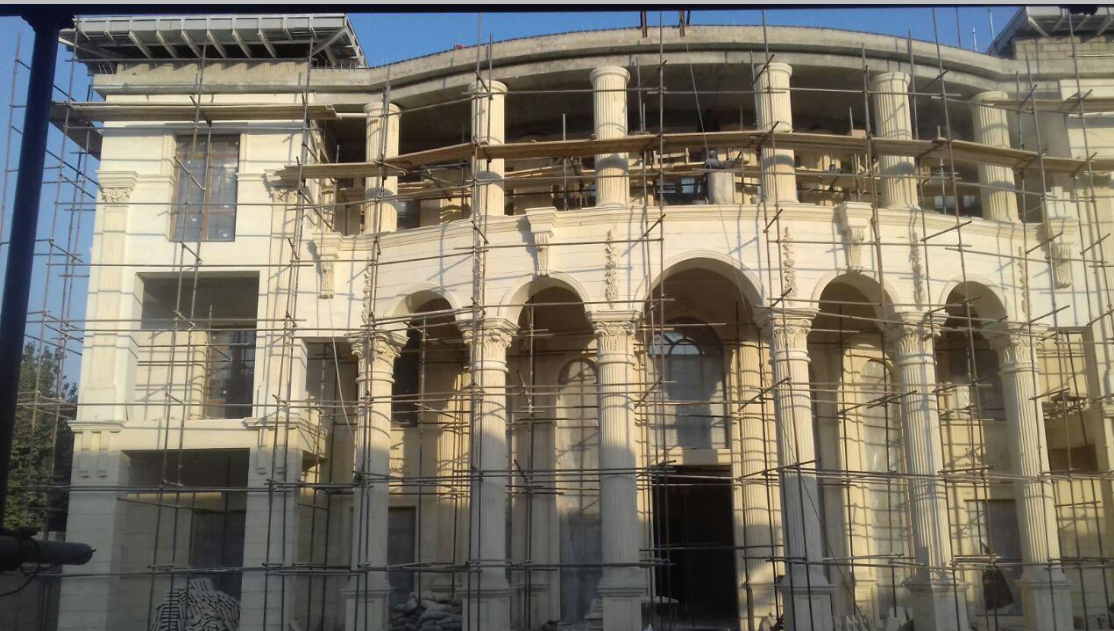
..... Project

..... Facade

Amount 3.600 m2

Duration 18 Months

Year 2016





PRIVATE

VILLA

DANGARA - TAJIKISTAN

Type of Work	Facade
Amount	1.900 m2
Duration	9 Months
Year	2015





ARC APARTMENT BUILDING

KOCAELİ – TURKEY

Type of Work	Turnkey
Amount	5.400 m2
Duration	22 Months
Year	2005



MEP TEKNİK FACTORY

KOCAELİ – TURKEY

Type of Work	Turnkey
Amount	3.500 m2
Duration	10 Months
Year	2005



HACI SHERIF

BAZAAR & BUSINESS CENTER

KURGANTEPPA – TAJIKISTAN

Type of Work	Concrete Construction
.....	Project
.....	Facade
.....	Infrastructures
Amount	38.600 m2
Duration	28 Months
Year	2009





MARPORT

WESTERN PORT PRECAST WALLS

ISTANBUL – TURKEY

Type of Work	Precast Production&Montage
Amount	5.600 m3
Duration	12 Months
Year	2003





ORION BANK BRANCH & HEADOFFICE

DUSHANBE – TAJIKISTAN

Type of Work	Steel & Concrete Construction Retrofitting
Amount	5.600 m2
Duration	8 Months
Year	2006



PIMPA PLASTIK

PVC FITTINGS FACTORY

ISTANBUL – TURKEY

Type of Work	Turnkey
Amount	2.400 m2
Duration	12 Months
Year	2003





MODERN PLASTIK

PVC FACTORY

ISTANBUL – TURKEY

Type of Work	Turnkey
Amount	6.500 m2
Duration	8 Months
Year	2002



PRESTRESSED BRIDGE BEAMS

BALIKESIR – TURKEY

Type of Work	Production
Amount	12.000 m3
Duration	16 Months
Year	2005





CONCRETE ELECTRIC POLES

BALIKESIR – TURKEY

Type of Work	Production
Amount	4.000 m3
Duration	16 Months
Year	2005



UCA KHOROG

UNIVERSITY CAMPUS BUILDING

KHOROG-TAJIKISTAN

Type of Work	Concrete Construction
.....	Facade
Amount	15.900 m2
Duration	16 Months
Year	2015





AGA KHAN HOSPITAL BUILDING

KHOROG-TAJIKISTAN

Type of Work	Concrete Construction
.....	Facade
Amount	7.700 m2
Duration	18 Months
Year	2017







СВИДЕТЕЛЬСТВО

О государственной регистрации юридического лица (субъекта предпринимательства)

Настоящим подтверждается, что в Единый государственный реестр субъектов предпринимательства внесена запись о создании:

Общество с ограниченной ответственностью "CONTEC"

(Полное наименование юридического лица – субъекта предпринимательства с указанием организационно-правовой формы)

ООО "CONTEC"

(Сокращенное наименование юридического лица)

28.11.2018

(Число, месяц (прописью), год):

За регистрационным номером:

653088

Идентификационный номер налогоплательщика (ИНН):

305877985

Организационно-правовая форма:

Общество с ограниченной ответственностью

Местонахождение:

город Ташкент, Мирзо-Улугбекский район, ул. Буюк Ипак
Йули, , 143,

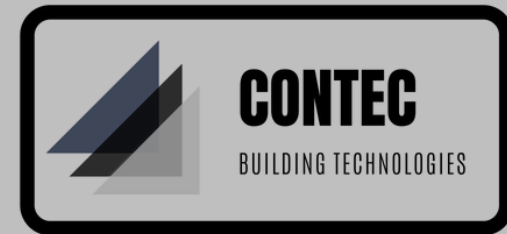
Свидетельство выдано:

город Ташкент, Мирзо-Улугбекский район, ЦЕНТР
ГОСУДАРСТВЕННЫХ УСЛУГ

(Полное наименование регистрирующего органа):



CONTEC
CONSTRUCTION



www.conteccconstruction.com
info@conteccconstruction.com

